

The Last Leaf

By Emily McNeil

Here at the Tempesty Project we often find ourselves in bleak conversation about the climate crisis, but find solace in O. Henry's short story "The Last Leaf" - a reminder of the power that persists in art, and in great generosity of spirit in a sometimes daunting world.

The Last Leaf is a relatively simple yet delicately elegant pattern well-suited for advanced beginners wanting to delve into lace work, but also involved enough to keep the interest of more experienced knitters.

Our recommended yarns are hand-dyed at Fidalgo Artisan Yarn Company (our wonderful local yarn shop here on Fidalgo Island) in small batches of just a few skeins at a time. Both are available at www.fidalgoyarns.com as well as in the shop itself in downtown Anacortes, WA.

Yarn:

One skein of either [Fidalgo Artisan Yarns Halo](#) (100g, 50% Wool, 50% Alpaca, 440yds) or [Fidalgo Artisan Yarns Marine Silk Fingering](#) (100g, 51% Silk, 29% Wool, 20% Seacell, 492yds)



Needles & Notions:

US6 (4mm) 32" circular needles (or to obtain gauge), approximately 230 6/0 or 5/0 seed beads, 0.75mm crochet hook for beading, stitch markers, blocking wires & t-pins (recommended for blocking)

Gauge:

Approx. 20 stitches = 4" in stockinette, blocked.

Measurements:

Halo version (dark forest green) is approximately 26" deep by 52" wide.

Marine Silk version (light sage green) is approximately 30" deep by 60" wide.

The Last Leaf is easily made smaller or larger by decreasing or increasing the number of times you work Rows 11-18 in the main body of the shawl. Making a larger shawl will require more yarn.

Pattern notes:

1. Pattern includes both written and charted instructions. Charts show only right-side rows.
2. Lace pattern repeats are between the asterisks in the written instructions, and outlined in black in the charts.
3. The Set-Up and Main written and charted instructions include both the right- and left-hand sides of the shawl, and the *ktbl* is the center stitch that runs down the spine. The Border instructions show only the right-hand side. Work as charted to the center stitch (*ktbl*), and then repeat from the beginning of the row, leaving out the first two stitches and ending with *k2*.
4. In Row 11 of the Main instructions and Row 1 of the Border instructions, the highlighted/italicized *sl2togk1psso* will be worked as a *k1* in the last repeat of each half of the shawl (i.e. before the center stitch and before the final *k2*). Note that the first time you work Row 11, it will be a *k1*.
5. You may want to use stitch markers to indicate the two border stitches on each side of the shawl, the center stitch, and between lace repeats. Note that after you have worked Rows 11-18 once, you will have to move your stitch markers in each subsequent Row 11.

Getting Started:

Cast on 5 stitches using long-tail or other preferred method. Purl one row.

Set-up:

Work rows 1-10 one time.

Row 1: *slwyif*, *k1*, *yo*, *ktbl*, *yo*, *k2*

Row 2 & all even rows: *slwyif*, *k1*, *p* to last 2 stitches, *k2*

Row 3: *slwyif*, *k1*, *yo*, *k1*, *yo*, *ktbl*, *yo*, *k1*, *yo*, *k2*

Row 5: *slwyif*, *k1*, *yo*, *k1*, *yo*, *k1*, *yo*, *k1*, *yo*, *ktbl*, *yo*, *k1*, *yo*, *k1*, *yo*, *k1*, *yo*, *k2*

Row 7: *slwyif*, *k1*, *yo*, *k2tog*, *k1*, *yo*, *k1*, *yo*, *k1*, *ssk*, *yo*, *ktbl*, *yo*, *k2tog*, *k1*, *yo*, *k1*, *yo*, *k1*, *ssk*, *yo*, *k2*

Row 9: *slwyif*, *k1*, *yo*, *k2tog*, *k2*, *yo*, *k1*, *yo*, *k2*, *ssk*, *yo*, *ktbl*, *yo*, *k2tog*, *k2*, *yo*, *k1*, *yo*, *k2*, *ssk*, *yo*, *k2*

Main body:

Work rows 11-18 eleven times if using Halo, twelve times if using Marine Silk Fingering. (See Notes 4 & 5, above.)

Row 11: *slwyif*, *k1*, *yo*, *k1*, **yo*, *ssk*, *k5*, *k2tog*, *yo*, *sl2togk1psso** *yo*, *ktbl*, *yo*, *k1*, **yo*, *ssk*, *k5*, *k2tog*, *yo*, *sl2togk1psso**, *yo*, *k2*

Row 12 & all even rows: *slwyif*, *k1*, *p* to last 2 stitches, *k2*

Row 13: *slwyif*, *k1*, *yo*, *k1*, *yo*, *k1*, **yo*, *k1*, *yo*, *ssk*, *k3*, *k2tog*, *yo*, *k1*, *yo*, *k1**, *yo*, *k1*, *yo*, *ktbl*, *yo*, *k1*, *yo*, *k1*, **yo*, *k1*, *yo*, *ssk*, *k3*, *k2tog*, *yo*, *k1*, *yo*, *k1**, *yo*, *k1*, *yo*, *k2*

Row 15: *slwyif*, *k1*, *yo*, *k2tog*, *k1*, *yo*, *k1*, **yo*, *k1*, *ssk*, *yo*, *ssk*, *k1*, *k2tog*, *yo*, *k2tog*, *k1*, *yo*, *k1**, *yo*, *k1*, *ssk*, *yo*, *ktbl*, *yo*, *k2tog*, *k1*, *yo*, *k1*, **yo*, *k1*, *ssk*, *yo*, *ssk*, *k1*, *k2tog*, *yo*, *k2tog*, *k1*, *yo*, *k1**, *yo*, *k1*, *ssk*, *yo*, *k2*

Row 17: *slwyif*, *k1*, *yo*, *k2tog*, *k2*, *yo*, *k1*, **yo*, *k2*, *ssk*, *yo*, *sl1k2togpsso*, *yo*, *k2tog*, *k2*, *yo*, *k1**, *yo*, *k2*, *ssk*, *yo*, *ktbl*, *yo*, *k2tog*, *k2*, *yo*, *k1*, **yo*, *k2*, *ssk*, *yo*, *sl1k2togpsso*, *yo*, *k2tog*, *k2*, *yo*, *k1**, *yo*, *k2*, *ssk*, *yo*, *k2*

Border:

Work rows 1-8 one time. (See Note 4, above)

Row 1: slwyif, k1, yo, k1, *yo, ssk, k5, k2tog, yo, *sl2togk1psso**, yo, **ktbl**, yo, k1, *, yo ssk, k5, k2tog, yo, *sl2togk1psso**, yo, k2

Row 2 & all even rows: slwyif, k1, p to last 2 stitches, k2

Row 3: slwyif, k1, yo, k1, yo, k1, *yo, k1, yo, ssk, k3, k2tog, yo, k1, yo, k1*, yo, k1, yo, **ktbl**, yo, k1, yo, k1, *yo, k1, yo, ssk, k3, k2tog, yo, k1, yo, k1*, yo, k1, yo, k2

Row 5: slwyif, k1, yo, k2tog, yo, k1, yo, k1, *yo, k1, yo, ssk, yo, ssk, k1, k2tog, yo, k2tog, yo, k1, yo, k1*, yo, k1, yo, ssk, yo, **ktbl**, yo, k2tog, yo, k1, yo, k1, *yo, k1, yo, ssk, yo, ssk, k1, k2tog, yo, k2tog, yo, k1, yo, k1*, yo, k1, yo, ssk, yo, k2

Row 7: slwyif, k1, yo, k2tog, yo, k2tog, yo, k1, yo, k1, *yo, k1, yo, ssk, yo, ssk, yo, *sl1k2togpsso*, yo, k2tog, yo, k2tog, yo, k1, yo, k1*, yo, k1, yo, ssk, yo, ssk, yo, **ktbl**, yo, k2tog, yo, k2tog, yo, k1, yo, k1, *yo, k1, yo, ssk, yo, ssk, yo, *sl1k2togpsso*, yo, k2tog, yo, k2tog, yo, k1, yo, k1*, yo, k1, yo, ssk, yo, ssk, yo, k2

Row 8: slwyif, k1, p to last 2 stitches, k2

The beaded picot bind-off adds an extra bit of sparkle, weight, and elegance to your shawl. Work as follows: bind off 2 stitches, *slip stitch from right needle to left, cast on 2 stitches, place bead using crochet hook method, bind off 4 stitches*. Repeat from * until 2 stitches remain, slip stitch from right needle to left needle, cast on 2 stitches, bind off remaining stitches.

Weave in ends, soak in cool water for about 30 minutes, gently wring out and roll in a towel to remove excess water before blocking. I recommend running blocking wires along the top for a straight edge, stopping several inches from the ends to allow the corners to curve up. Place pins at the tip of each leaf and in the middle stitch between the leaves.



O. Henry's The Last Leaf, originally published in 1907, is available at https://americanenglish.state.gov/files/ae/resource_files/the-last-leaf.pdf



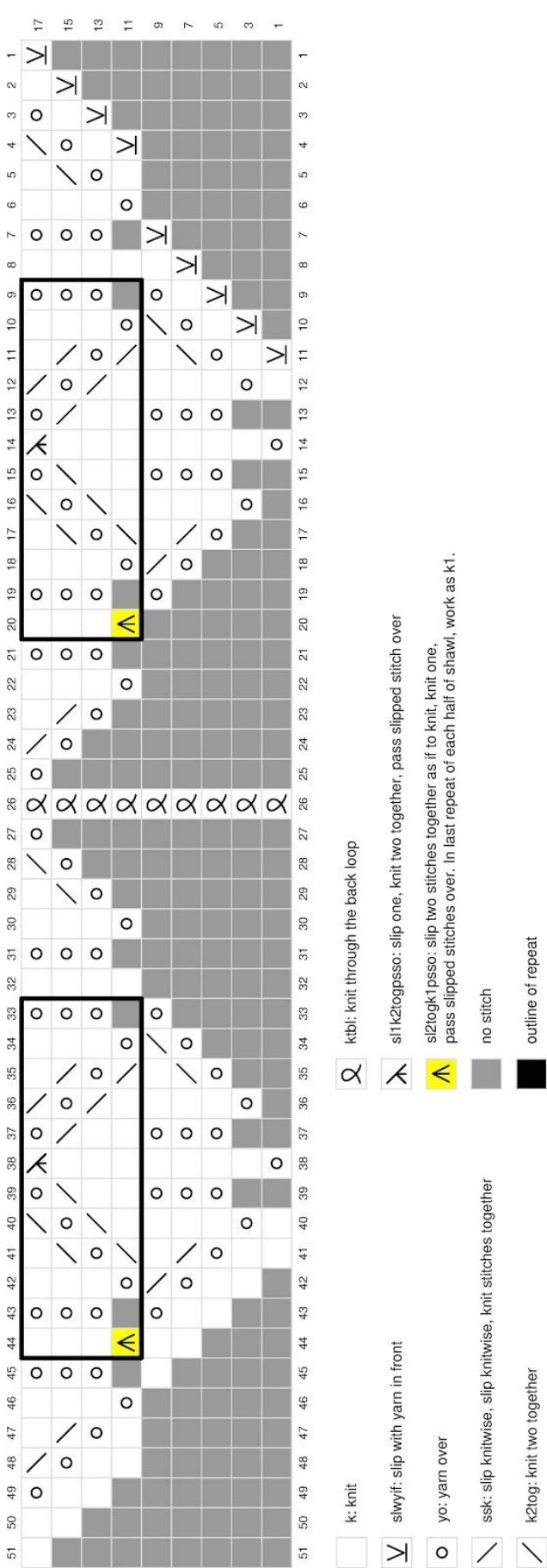
Questions or Comments?

Please contact us at: tempestryproject@gmail.com

www.tempestryproject.com



Set-Up and Main Body Chart



Border Chart

